

Fig 1: Suspected cases tested by VRDLs for dengue and % positivity, 48th week of December 2016

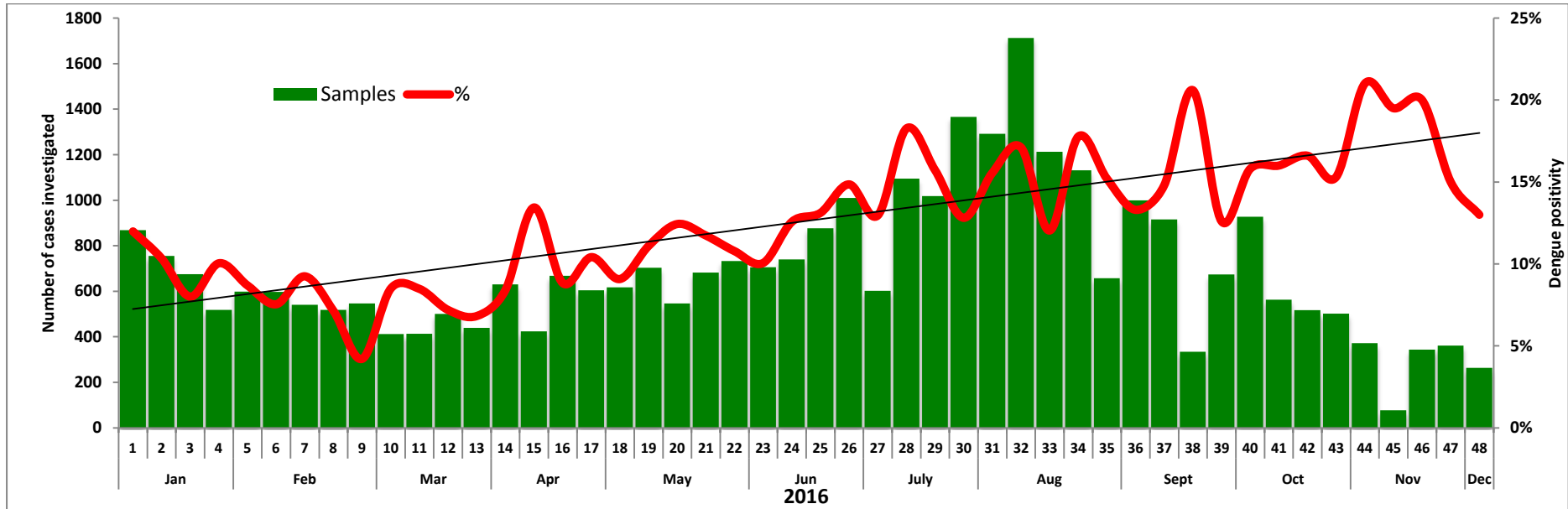


Fig 2: Suspected cases tested by VRDL for Chikungunya and % positivity, 48th week of December 2016

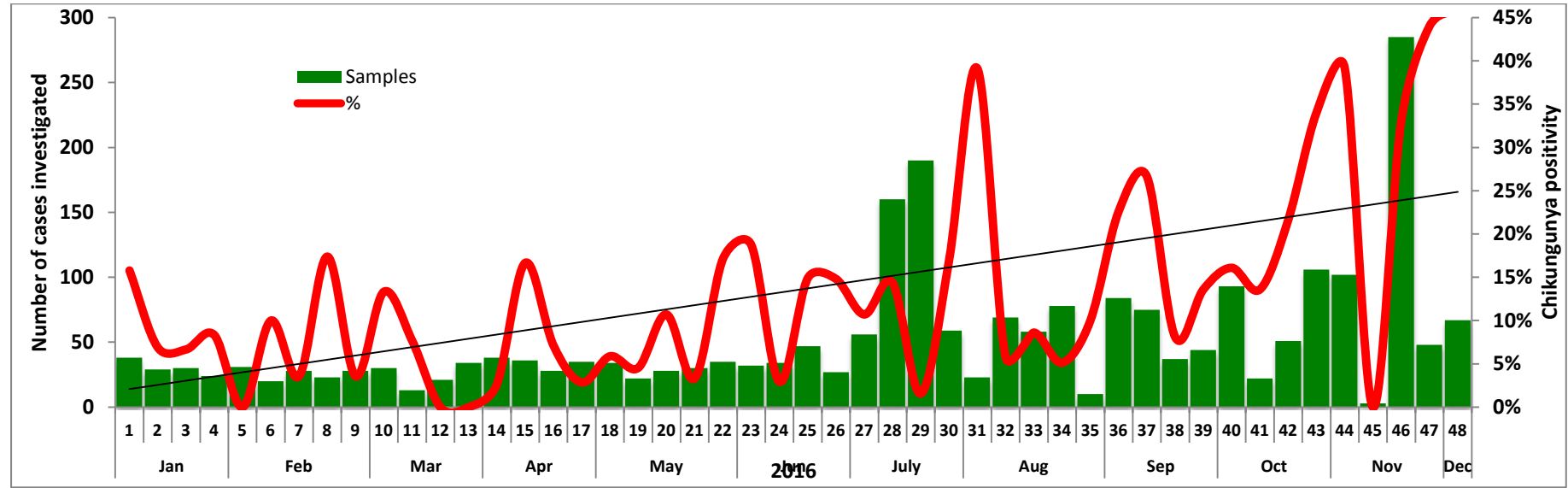


Table 1: Cumulative number of samples tested for dengue and Chikungunya, 48th week of December 2016

Name of the VRDL	Dengue		Chikungunya	
	No. positive (%)	Samples tested	No. positive (%)	Samples tested
KMC Manipal, Karnataka	10 (16%)	61	2 (67%)	6
RMRC, Jabalpur, MP	0 (0%)	2	0 (0%)	2
BJMC, Ahmadabad, Gujarat	7 (7%)	106	12 (39%)	31
PGIMR, Chandigarh	5 (15%)	34	17 (63%)	27
GMC, Jamnagar, Gujarat	2 (17%)	12	0 (0%)	1
MMC, Madurai, TN	5 (29%)	17	0	0
SVIMS, Tirupathi	0 (0%)	17	0	0
TMC, Theni, TN	4 (50%)	8	0	0
JNIMSH, Imphal, Manipur	2 (29%)	7	0	0
Total	35 (13%)	264	31 (46%)	67

Fig 3: Map showing suspected outbreaks of dengue diagnosed by VRDLs, 48th week of December 2016



	No. of Dengue Outbreaks	No. of Chikungunya Outbreaks
Up to Week 47	21	-
Week 48	-	-